

# Scale samples from salmonids



Find more info  
about scale samples  
here

Foto: Audun Rikardsen/UJT. Grafisk design: Eva Setsaas/NINA

The Norwegian institute for nature research (NINA) has been collecting scale samples from more than 100 Norwegian salmon rivers since 1989. The growth pattern in the fish scales offers valuable information about the fish. NINA collects scale samples from salmon, sea trout and Arctic char.

## Would you like information about your salmon?

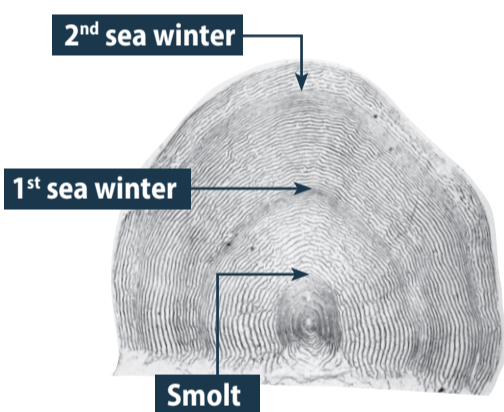
Write your mobile number on the envelope with the scale sample, and you will receive an sms with information about the salmon.

### Analysis of the growth pattern in the scale

- ▶ Is the salmon a wild salmon or an escaped farmed salmon?
- ▶ How old is the fish (number of years in the sea and in the river)?
- ▶ Has the fish spawned earlier?
- ▶ How fast did the fish grow?

### The fish scales can also be used in genetic studies

- ▶ Is the salmon a pure wild salmon, farmed salmon or a hybrid?
- ▶ Are there genetic differences between wild salmon populations in different rivers?



Magnified salmon scale. The smolt stadium shows the transition from the juvenile freshwater phase to the marine feeding migration.

## Taking scale samples

- ▶ The sample should be taken from the area behind the dorsal fin and slightly above the sideline
- ▶ Take approximately 30 scales from dead fish with a knife
- ▶ Place the scale sample in a scale envelope from NINA. Remember to fill in your contact information and the information about the fish. You will find the address to where you should send it on the back of the envelope
- ▶ NB! Do not store the sample in plastic bags

